

UFFICIO MOBILITA' V SETTORE: Gestione del Territorio

**PROGETTO DELLA RETE DEI SERVIZI DI TRASPORTO PUBBLICO LOCALE NEL TERRITORIO COMUNALE**

ELAB. n° **4**

**CARTA GENERALE DELLA RETE URBANA**

**R.U.P.**

Dott. Ing. Luigi Giampaolino

**PROGETTISTI**

Geom. Enrico Colella

**Supporto Specialistico**

Dott. Ing. Edmondo Tordi

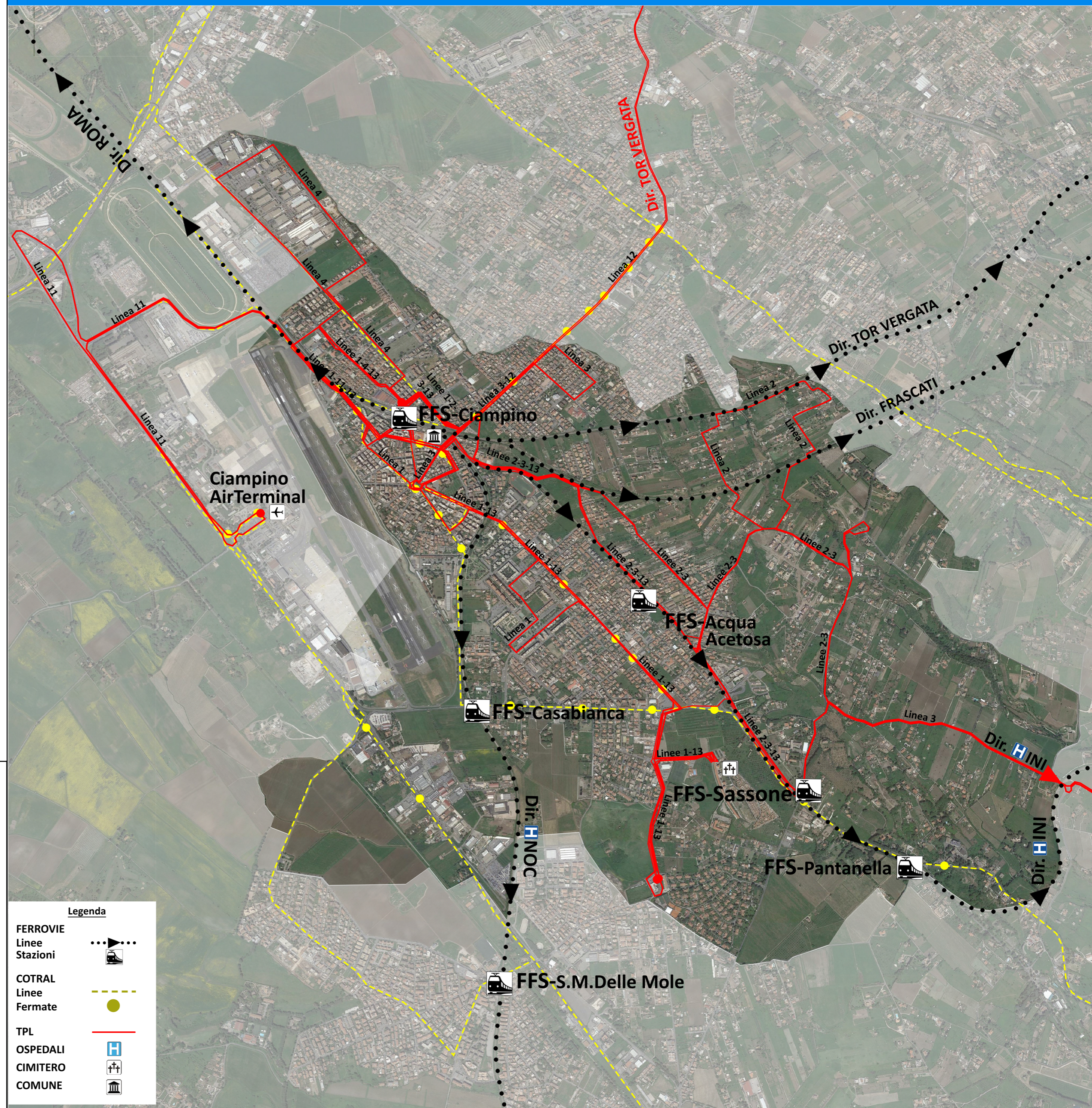
Ing. Marzia Sassu

**DATA EMISSIONE:**







**DATA DI VALIDAZIONE:**

**DATA PUBBLICAZIONE:**

REV.1	Data:	REV.3	Data:
REV.2	Data:	REV.4	Data:



**Legenda**

- FERROVIE
  - Linee 
  - Stazioni 
- COTRAL
  - Linee 
  - Fermate 
- TPL
  - OSPEDALI 
  - CIMITERO 
  - COMUNE 